

EXECUTIVE SUMMARY - NOVEMBER 2014

CLIENT: SAMPLE COMPANY

**CONFIDENTIAL**



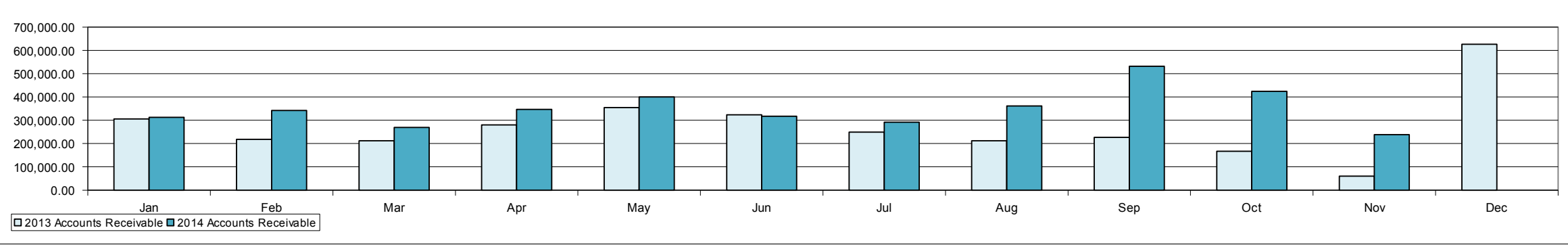
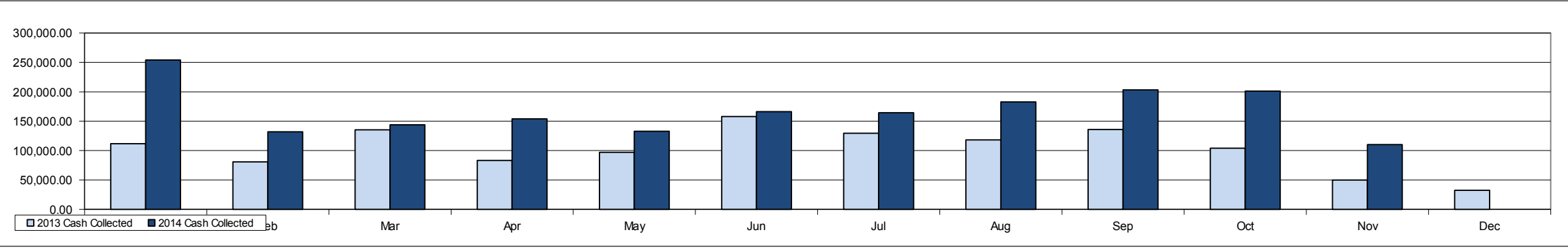
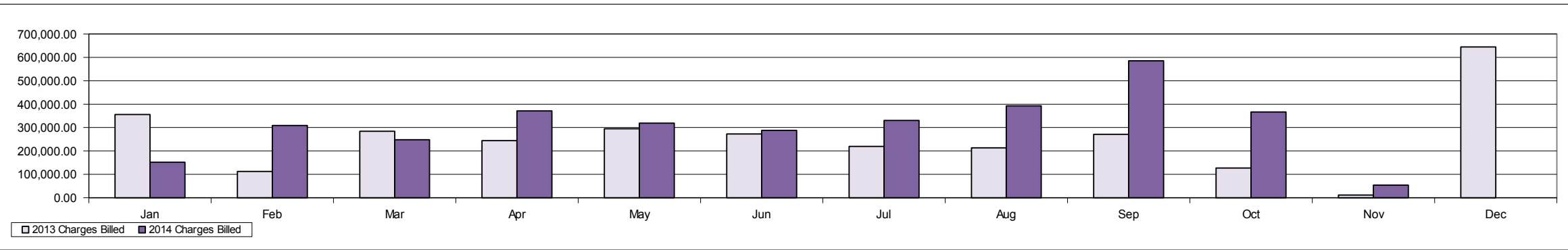
**FINANCIAL SUMMARY: (THIS SECTION SHOWS EVERYTHING THAT AMB RECEIVED AND PROCESSED IN A GIVEN MONTH, REGARDLESS OF THE ACTUAL DATES OF SERVICE OR DATES OF PAYMENT)**

	Jan-13	Feb-13	Mar-13	Apr-13	May-13	Jun-13	Jul-13	Aug-13	Sep-13	Oct-13	Nov-13	Dec-13	TOTAL
<b>Charges Billed</b>	\$356,224.00	\$112,456.00	\$283,865.00	\$244,095.00	\$294,865.00	\$272,875.00	\$219,030.00	\$213,666.00	\$271,116.00	\$126,919.00	\$11,215.00	\$644,630.03	<b>\$3,050,956.03</b>
<b>Contractual Adjustments</b>	(\$114,170.03)	(\$104,896.20)	(\$153,944.36)	(\$92,488.44)	(\$89,836.54)	(\$142,651.67)	(\$125,794.40)	(\$103,309.95)	(\$118,725.89)	(\$79,655.24)	(\$37,874.28)	(\$44,017.91)	<b>(\$1,207,364.91)</b>
<b>Insurance Payments</b>	(\$106,944.53)	(\$78,454.73)	(\$125,164.85)	(\$80,588.47)	(\$96,499.23)	(\$153,219.44)	(\$120,473.72)	(\$104,071.42)	(\$123,980.86)	(\$98,588.85)	(\$45,884.67)	(\$28,607.30)	<b>(\$1,162,478.07)</b>
<b>Patient Payments</b>	(\$4,810.46)	(\$2,250.50)	(\$10,148.71)	(\$2,489.56)	(\$528.00)	(\$4,788.45)	(\$8,853.95)	(\$14,150.84)	(\$12,017.38)	(\$5,435.62)	(\$3,966.01)	(\$3,884.32)	<b>(\$73,323.80)</b>
<b>Other Adjustments</b>	\$261.65	(\$14,998.40)	(\$552.36)	(\$118.00)	(\$33,838.77)	(\$2,884.33)	(\$38,717.40)	(\$29,435.49)	(\$1,101.30)	(\$3,575.36)	(\$29,813.36)	(\$1,550.50)	<b>(\$156,323.62)</b>
<b>Accounts Receivable</b>	\$305,939.43	\$217,795.60	\$211,850.32	\$280,260.85	\$354,423.31	\$323,754.42	\$248,944.95	\$211,643.25	\$226,933.82	\$166,597.75	\$60,274.43	\$626,844.43	
<b>Patient Visits</b>	417	155	314	328	353	333	315	315	409	185	12	878	<b>4,014</b>
<b>Average Charges per Visit</b>													<b>\$760.08</b>
<b>Average Payments per Visit</b>													<b>\$307.87</b>
<b>Total Cash Collected</b>	\$111,754.99	\$80,705.23	\$135,313.56	\$83,078.03	\$97,027.23	\$158,007.89	\$129,327.67	\$118,222.26	\$135,998.24	\$104,024.47	\$49,850.68	\$32,491.62	<b>\$1,235,801.87</b>
<b>Less: Xolair Payments (J2357)</b>	\$0.00	\$0.00	\$0.00	\$0.00	\$0.00	(\$1,640.59)	(\$67.72)	\$0.00	(\$1,220.16)	\$0.00	\$0.00	\$0.00	<b>(\$2,928.47)</b>
<b>Net Cash Collected</b>	\$111,754.99	\$80,705.23	\$135,313.56	\$83,078.03	\$97,027.23	\$156,367.30	\$129,259.95	\$118,222.26	\$134,778.08	\$104,024.47	\$49,850.68	\$32,491.62	<b>\$1,232,873.40</b>
<b>Days in A/R</b>	57.89	41.78	36.98	47.24	57.73	48.75	35.89	29.92	30.46	23.18	8.78	74.99	

	Jan-14	Feb-14	Mar-14	Apr-14	May-14	Jun-14	Jul-14	Aug-14	Sep-14	Oct-14	Nov-14	Dec-14	TOTAL
<b>Charges Billed</b>	\$151,550.00	\$308,550.00	\$248,056.00	\$371,312.60	\$318,814.00	\$287,885.00	\$330,143.00	\$393,143.00	\$584,890.00	\$366,946.00	\$53,785.00		<b>\$3,415,074.60</b>
<b>Contractual Adjustments</b>	(\$208,192.03)	(\$125,471.45)	(\$170,997.38)	(\$135,917.36)	(\$127,572.47)	(\$156,498.87)	(\$125,391.21)	(\$134,068.13)	(\$157,275.30)	(\$242,949.48)	(\$127,757.51)		<b>(\$1,712,091.19)</b>
<b>Insurance Payments</b>	(\$253,948.59)	(\$128,512.83)	(\$138,710.82)	(\$151,406.58)	(\$131,846.81)	(\$162,586.40)	(\$155,680.53)	(\$170,388.41)	(\$199,854.04)	(\$196,583.46)	(\$107,958.61)		<b>(\$1,797,477.08)</b>
<b>Patient Payments</b>	(\$132.60)	(\$3,252.09)	(\$5,211.91)	(\$2,622.90)	(\$935.43)	(\$3,549.54)	(\$8,849.74)	(\$12,364.33)	(\$3,503.63)	(\$4,612.65)	(\$2,262.39)		<b>(\$47,297.21)</b>
<b>Other Adjustments</b>	(\$3,617.44)	(\$21,646.50)	(\$6,057.22)	(\$3,629.23)	(\$5,034.25)	(\$47,933.26)	(\$66,525.26)	(\$6,000.18)	(\$54,307.09)	(\$30,363.80)	(\$1,565.94)		<b>(\$246,680.17)</b>
<b>Accounts Receivable</b>	\$312,503.77	\$342,170.90	\$269,249.57	\$346,986.10	\$400,411.14	\$317,728.07	\$291,424.33	\$361,746.28	\$531,696.22	\$424,132.83	\$238,373.38		
<b>Patient Visits</b>	371	563	441	624	590	520	583	594	759	431	72		<b>5,548</b>
<b>Average Charges per Visit</b>													<b>\$615.55</b>
<b>Average Payments per Visit</b>													<b>\$332.51</b>
<b>Total Cash Collected</b>	\$254,081.19	\$131,764.92	\$143,922.73	\$154,029.48	\$132,782.24	\$166,135.94	\$164,530.27	\$182,752.74	\$203,357.67	\$201,196.11	\$110,221.00		<b>\$1,844,774.29</b>
<b>Less: Xolair Payments (J2357)</b>	\$0.00	\$0.00	\$0.00	(\$124.44)	(\$45.20)	(\$137.51)	(\$85.48)	(\$54.72)	(\$5,840.00)	(\$8,265.01)	(\$5,010.64)		<b>(\$19,563.00)</b>
<b>Net Cash Collected</b>	\$254,081.19	\$131,764.92	\$143,922.73	\$153,905.04	\$132,737.04	\$165,998.43	\$164,444.79	\$182,698.02	\$197,517.67	\$192,931.10	\$105,210.36		<b>\$1,825,211.29</b>
<b>Days in A/R</b>	40.07	41.05	32.69	40.41	46.28	36.55	32.39	38.12	51.38	38.54	21.43		

NOTE: Monthly figures shown may include charges, payments or adjustments processed in the current month for dates of service prior to the current month.



EXECUTIVE SUMMARY - NOVEMBER 2014

CLIENT: SAMPLE COMPANY

**CONFIDENTIAL**



**AGING OF RECEIVABLES:**

	0 - 30	31 - 60	61 - 90	91+	Total
<b>Patient Aging</b>	\$36,923.73	\$88,995.20	\$27,452.89	\$84,769.56	\$238,141.38
(total amount due by date of service)	16%	37%	12%	36%	100%
<b>Patient Remainder Aging</b>	\$97,569.02	\$3,835.17	\$385.02	\$15,458.66	\$117,247.87
(amounts due from patients & partial insurance payments)	83%	3%	0%	13%	100%

*(This is the amount that patients owe, after the insurance companies have paid their portion. This amount is already included in the total Patient Aging above.)*

**SERVICES BY LOCATION:**

	YTD 2014 CASES	YTD 2014 CHARGES		2013 CASES	2013 CHARGES	
Glencrest Healthcare and Rehab	-	\$-	0.00%	-	\$-	0.00%
XXXXXXXXXXXXXXXXXX	797	\$2,093,935.60	61.41%	1,146	\$2,572,227.03	88.72%
XXXXXXXXXXXXXXXXXX	283	\$928,230.00	27.22%	80	\$238,837.00	8.24%
Lutheran General Hospital	-	\$-	0.00%	-	\$-	0.00%
Norwegian American Hospital	-	\$-	0.00%	-	\$-	0.00%
Northwest Community Hospital	-	\$-	0.00%	-	\$-	0.00%
Thorek Memorial Hospital	-	\$-	0.00%	1	\$425.00	0.01%
XXXXXXXXXXXXXXXXXX	134	\$387,388.00	11.36%	47	\$87,695.00	3.02%
	1,214	\$3,409,553.60	100.00%	1,274	\$2,899,184.03	100.00%

**TOP 10 HIGHEST VOLUME PROCEDURES:**

	Code	YTD 2014		Code	2013		
1) Percutaneous Allergy Tests (scratch)	95004	66,103	60.32%	1) Percutaneous Allergy Tests (scratch)	95004	70,492	70.02%
2) Allergy Serum	95165	26,994	24.63%	2) Allergy Serum	95165	17,509	17.39%
3) Venom Skin Test	95017	2,826	2.58%	3) Venom Skin Test	95017	3,283	3.26%
4) Injection, Allergen, Multiple	95117	2,622	2.39%	4) Rapid Desensitization Procedure	95180	1,370	1.36%
5) Rapid Desensitization Procedure	95180	1,539	1.40%	5) Injection, Allergen, Multiple	95117	1,228	1.22%
6) Airway Resistance by Impulse Oscillometry	94728	1,302	1.19%	6) Allergy Patch Test	95044	939	0.93%
7) Allergy Patch Test	95044	960	0.88%	7) Admin. Med Injection	96372	829	0.82%
8) Peak Flow Test	94200	876	0.80%	8) Airway Resistance by Impulse Oscillometry	94728	825	0.82%
9) Office Visit Established Patient Level 4	99214	830	0.76%	9) Office Visit Established Patient Level 1	99211	596	0.59%
10) Admin. Med Injection	96372	754	0.69%	10) Maximum Voluntary Ventilation	94200	595	0.59%
All Others		4,777	4.36%	All Others		3,007	2.99%
<b>Total</b>		<b>109,583</b>	<b>100.00%</b>	<b>Total</b>		<b>100,673</b>	<b>100.00%</b>

EXECUTIVE SUMMARY - NOVEMBER 2014

CLIENT: SAMPLE COMPANY

**CONFIDENTIAL**



**PROVIDER SUMMARY BY DATE OF SERVICE: (VISITS ARE SHOWN BY DATE OF SERVICE, REGARDLESS OF WHICH MONTH AMB RECEIVED AND PROCESSED THE DATA)**

		Jan-13	Feb-13	Mar-13	Apr-13	May-13	Jun-13	Jul-13	Aug-13	Sep-13	Oct-13	Nov-13	Dec-13	TOTAL
Visits	xxxxxxxxxxxxxxxx, M.D.	246	208	268	323	373	349	304	337	356	243	419	460	3,886
		Jan-14	Feb-14	Mar-14	Apr-14	May-14	Jun-14	Jul-14	Aug-14	Sep-14	Oct-14	Nov-14	Dec-14	TOTAL
Visits	xxxxxxxxxxxxxxxx, M.D.	420	369	536	606	590	547	587	550	606	609	61	26	5,507

NOTE: Monthly totals reflect services that were provided in that month, according to date of service, regardless of when the data was received and processed by AMB. In each month's executive summary, prior month figures are updated.

**PROVIDER SUMMARY BY DATE OF SERVICE: (CHARGES ARE SHOWN BY DATE OF SERVICE, REGARDLESS OF WHICH MONTH AMB RECEIVED AND PROCESSED THE DATA)**

		Jan-13	Feb-13	Mar-13	Apr-13	May-13	Jun-13	Jul-13	Aug-13	Sep-13	Oct-13	Nov-13	Dec-13	TOTAL
Charges	xxxxxxxxxxxxxxxx, M.D.	\$206,491.00	\$158,034.00	\$251,238.00	\$254,589.00	\$311,513.00	\$287,696.00	\$206,693.00	\$219,654.00	\$233,950.00	\$148,280.00	\$328,287.02	\$298,280.01	\$2,904,705.03
		Jan-14	Feb-14	Mar-14	Apr-14	May-14	Jun-14	Jul-14	Aug-14	Sep-14	Oct-14	Nov-14	Dec-14	TOTAL
Charges	xxxxxxxxxxxxxxxx, M.D.	\$222,831.00	\$181,322.00	\$296,359.00	\$362,793.60	\$397,495.00	\$333,494.00	\$301,765.00	\$322,897.00	\$421,666.00	\$510,313.00	\$42,588.00	\$16,030.00	\$3,409,553.60

NOTE: Monthly totals reflect services that were provided in that month, according to date of service, regardless of when the data was received and processed by AMB. In each month's executive summary, prior month figures are updated.

**PROVIDER SUMMARY BY DATE OF PAYMENT: (PAYMENTS ARE SHOWN BY DATE OF PAYMENT, REGARDLESS OF WHICH MONTH AMB RECEIVED AND PROCESSED THE DATA)**

		Jan-13	Feb-13	Mar-13	Apr-13	May-13	Jun-13	Jul-13	Aug-13	Sep-13	Oct-13	Nov-13	Dec-13	TOTAL
Payments	xxxxxxxxxxxxxxxx, M.D.	\$107,650.91	\$84,324.44	\$100,075.75	\$81,907.98	\$105,907.78	\$171,461.71	\$113,516.84	\$126,687.83	\$128,269.04	\$121,017.17	\$29,724.14	\$10,093.77	\$1,180,637.36
		Jan-14	Feb-14	Mar-14	Apr-14	May-14	Jun-14	Jul-14	Aug-14	Sep-14	Oct-14	Nov-14	Dec-14	TOTAL
Payments	xxxxxxxxxxxxxxxx, M.D.	\$264,473.48	\$136,389.20	\$134,858.26	\$169,592.67	\$162,128.28	\$158,273.44	\$162,017.01	\$160,274.98	\$186,707.30	\$230,917.64	\$107,344.05	\$9,830.63	\$1,882,806.94

NOTE: Monthly totals reflect payments that were dated that month (check date, EFT date, etc.), regardless of when the data was received and processed by AMB. In each month's executive summary, prior month figures are updated.

EXECUTIVE SUMMARY - NOVEMBER 2014

CLIENT: SAMPLE COMPANY

CONFIDENTIAL



TOP 10 PAYERS BY CHARGES:

YTD 2014			2013				
1)	Blue Cross	\$2,077,494.00	60.93%	1)	Blue Cross	\$1,595,376.00	55.03%
2)	United Healthcare	\$324,140.00	9.51%	2)	United Healthcare	\$287,470.00	9.92%
3)	Aetna	\$311,077.00	9.12%	3)	Aetna	\$221,827.00	7.65%
4)	Cigna	\$276,398.00	8.11%	4)	Medicaid Illinois HFS	\$157,234.00	5.42%
5)	Medicare	\$123,968.00	3.64%	5)	Cigna	\$121,639.00	4.20%
6)	Tricare	\$64,926.60	1.90%	6)	Medicare	\$97,608.03	3.37%
7)	Humana	\$45,388.00	1.33%	7)	Tricare	\$79,315.00	2.74%
8)	Medicaid Illinois	\$27,679.00	0.81%	8)	Humana	\$54,222.00	1.87%
9)	Advocate	\$25,146.00	0.74%	9)	Coventry Healthcare	\$53,926.00	1.86%
10)	Healthlink	\$23,094.00	0.68%	10)	Century PHO	\$37,705.00	1.30%
	All Others	\$110,243.00	3.23%		All Others	\$192,862.00	6.65%
		<b>\$3,409,553.60</b>	100.00%			<b>\$2,899,184.03</b>	100.00%

TOP 10 PAYERS BY PAYMENTS:

YTD 2014			2013				
1)	Blue Cross	\$1,062,185.75	56.42%	1)	Blue Cross	\$633,218.55	51.95%
2)	United Healthcare	\$216,543.86	11.50%	2)	United Healthcare	\$156,417.77	12.83%
3)	illino	\$187,333.72	9.95%	3)	Aetna	\$109,497.48	8.98%
4)	Cigna	\$162,029.42	8.61%	4)	Cigna	\$78,249.52	6.42%
5)	Medicare	\$67,305.68	3.57%	5)	Medicare	\$45,867.69	3.76%
6)	Humana	\$37,153.21	1.97%	6)	Medicaid Illinois HFS	\$36,336.12	2.98%
7)	Tricare	\$26,464.99	1.41%	7)	Tricare	\$29,302.43	2.40%
8)	Healthlink	\$19,246.95	1.02%	8)	Humana	\$25,396.83	2.08%
9)	Advocate	\$15,644.78	0.83%	9)	Century PHO	\$20,032.34	1.64%
10)	Great West	\$10,266.55	0.55%	10)	Advocate	\$11,551.69	0.95%
	All Others	\$78,632.03	4.18%		All Others	\$73,089.97	6.00%
		<b>\$1,882,806.94</b>	100.00%			<b>\$1,218,960.39</b>	100.00%

TOP 10 RECEIVABLES:

As of 11/30/2014			As of 12/31/2013				
1)	Blue Cross	\$96,928.04	40.66%	1)	Blue Cross	\$332,252.01	53.00%
2)	Cigna	\$66,507.08	27.90%	2)	Unicare	\$62,747.95	10.01%
3)	Unicare	\$21,341.34	8.95%	3)	Aetna	\$59,790.22	9.54%
4)	Aetna	\$20,357.66	8.54%	4)	Coventry Healthcare	\$46,443.00	7.41%
5)	Medicare	\$8,305.80	3.48%	5)	Cigna	\$26,179.51	4.18%
6)	Humana	\$4,914.72	2.06%	6)	Medicare	\$16,631.60	2.65%
7)	Health Partners	\$4,110.00	1.72%	7)	Humana	\$14,858.78	2.37%
8)	Connecticare	\$3,258.97	1.37%	8)	Medicaid Illinois HFS	\$9,503.00	1.52%
9)	Tricare	\$2,392.81	1.00%	9)	Coresource	\$8,316.00	1.33%
10)	Advocate	\$2,055.00	0.86%	10)	Nippon	\$5,808.00	0.93%
	All Others	\$8,201.96	3.44%		All Others	\$44,314.36	7.07%
		<b>\$238,373.38</b>	100.00%			<b>\$626,844.43</b>	100.00%